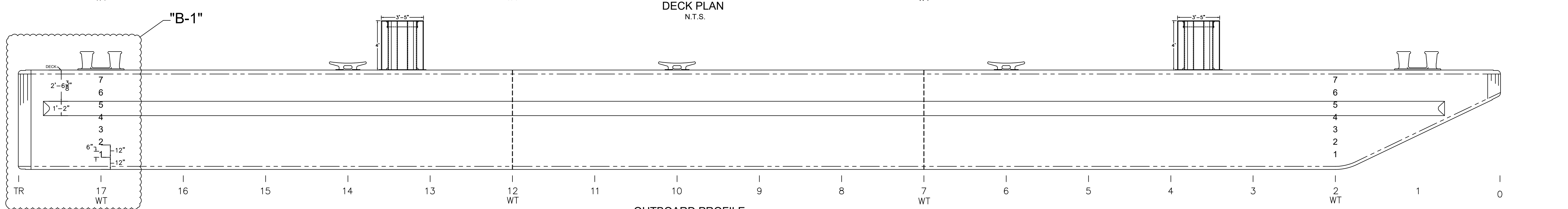
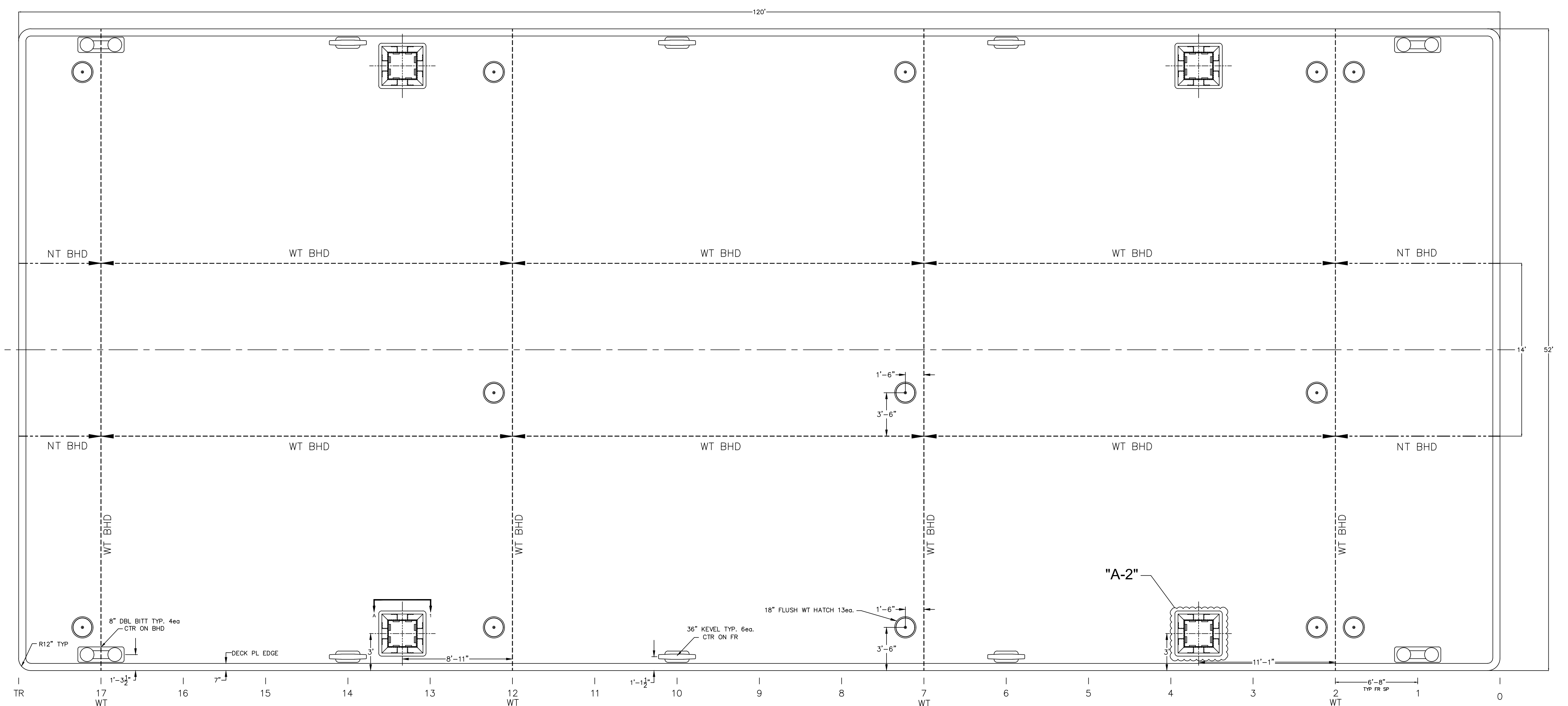


REVISIONS			
ZONE/REV	DESCRIPTION	DATE	APPROVED



**NOTES:**  
 DECK, SIDE, BOTTOM, RAKE, TRANSOM, LONG'L BHD = 3/8" PLATE  
 TRANSV BHD = 1/2" PLATE  
 HEADLOG = 1/2" PLATE  
 DECK TRANSV = [ 12"x20.7#  
 SIDE, BOTM TRANSV = [ 10"x15.3#  
 LONG'L BHD TRANSV = L 6"x6"x3/8"  
 HEADLOG STIFF = 12"x3"x3/8" FLG PL  
 DECK LONG'L, SIDE, BHD LONG'L, BTM LONG'L = L 5"x3"x3/8"

CONTRACT NO.	CBC 1200	LAD SERVICES	
DWG BY	D.K.T. 4/17/2019	1043 East Stephenville Road Stephenville, Louisiana 70380	
CHK BY		120' x 52' x 8' SPUD BARGE GENERAL ARRANGEMENT & OUTBOARD PROFILE	
DESIGNER		AS BUILT	
ENG. CORD.		DWG. NO.	HULL NUMBER
CHEF ENGR.		E	
		SCALE	N.T.S.
		REVISION	
		SHEET NO.	1 OF 3

PRODUCED BY AN AUTODESK STUDENT VERSION

PRODUCED BY AN AUTODESK STUDENT VERSION